



**BAS Weekly Newsletter**  
**Timely Advice & Current News**



**CEO Notes**

**Dr Kylie Munyard - Colour Genetics**

**EAG Webinar Natural Fibre Dyeing**

**HoEAG Spring Fiesta - update**

**Event Diary**

**Show Diary**



## CEO NOTES

### **National Show**

The named entries for the Halter show will open on 1st Feb so it is important that any alpacas you plan to show have been registered. It is also a good time to check the colour of your alpacas is recorded correctly.

### **Farmers Country Showdown - BBC TV**

BAS members Bev Morgan, Neil Payne and Paul and Debbie Rippon featured in this weeks programme (alongside many other faces you might recognise). If you di not catch it you can find it here

[BBC iPlayer - The Farmers Country Showdown - Series 6: 8. Westmorland County Show](#)

### **BAS Board Blog**

This week Ken Frievoch considers field shelters and where to put them <https://www.bas-uk.com/alpacapedia/the-bas-board-blog/>

### **My Society**

Remember that Wildwood Animal Health offer 10% OFF worm counts for ALL Existing BAS Members.

You can email about this or anything else using [ceo@bas-uk.com](mailto:ceo@bas-uk.com)

*Duncan Pullar*

BAS CEO 07496578781

The screenshot shows a presentation slide with the following content:

- Sire:** Cosmic Ee AA (photo of a white alpaca)
- Dam:** Johara Ee aa (photo of a brown alpaca)
- Offspring:** Un-named Ee Aa (photo of a light brown alpaca)
- Genetic Cross Table:**

|  |     | Sire gametes      |                    |
|--|-----|-------------------|--------------------|
|  |     | E A               | e A                |
| Dam gametes                              | E a | EE Aa (brown)     | Ee Aa (mid brown)  |
|  | e a | Ee Aa (mid brown) | ee Aa (light fawn) |
| 25% brown, 50% mid brown, 25% light fawn |     |                   |                    |
- Logos:** Curtin University logo and a Zoom meeting grid with three participants.

## Dr Kylie Munyard

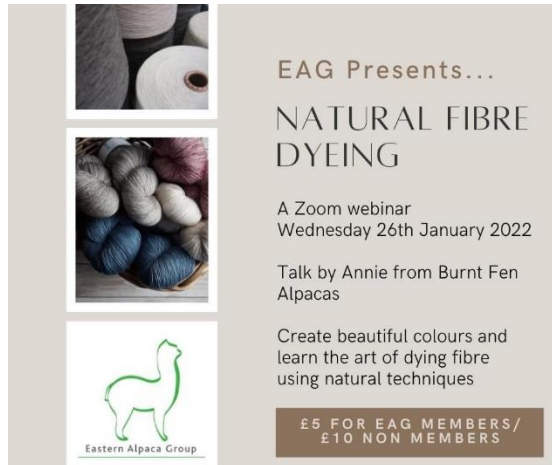
### Colour genetics

On Thursday morning an impressive 75 members attended the Zoom webinar delivered by Dr Kylie Munyard on colour genetics in alpacas. If you missed the presentation you can catch up using this link.

<https://youtu.be/ShuwaozkmBA>

Dr Munyard is interested in doing further research so if you have genetic test results and a picture of the alpaca you are willing to share she would be delighted to include it. If you have the BAS registration number then the pedigree can be examined too.

The email for contact is [K.Munyard@exchange.curtin.edu.au](mailto:K.Munyard@exchange.curtin.edu.au)



## EAG Winter Warmer Webinar - Introduction to using natural dyes

Join the EAG this January for a Zoom Webinar Winter Warmer on the 'Introduction to using natural dyes.'

Annie from Burnt Fen Alpacas will be providing us with an informative talk on Wednesday 26th January at 7pm, and will be able to answer any questions you may have on natural dyeing techniques.

Just £5 for EAG Members and £10 for Non Members.

Please see information below on how to join us!

1. Click on the REGISTRATION LINK <https://us06web.zoom.us/meeting/register/tZlvc-2prjkoGd24tqKAZQ9YNcrw62AGxuMh> BEFORE 8pm 24th January to trigger an invoice.
2. Payment must be received BEFORE 8pm 25th January to trigger PRESENTATION LINK to be sent to your email.
3. Only use the PRESENTATION LINK on the 26th January from 6.30pm to access waiting room prior to event start time at 7pm.



**Emerald Sponsors: Artwork Alpacas and Redens Alpacas**

The **Heart of England Alpaca Group Spring Alpaca Fiesta** will be held on **Friday 8<sup>th</sup>, Saturday 9<sup>th</sup> and Sunday 10<sup>th</sup> April 2022**

at **Bury Farm Equestrian Centre, Mill Lane, Slapton, Bucks LU7 9BT**

and our Judge will be **Mrs. Barbara Hetherington.**

Arrivals will be on Friday morning and judging will commence that afternoon.

The Committee are planning a bigger and better Show for our return in 2022. The Ring will be larger than previous years with a full lighting rig to ensure your alpacas are presented to the Judge at their best. We will Live Stream the Show plus hold the **Craft & Photography Competitions** with enhanced displays. Our entertainment on the Saturday night is still being finalised - details will be available soon.

**ENTRIES** for numbers only (minimum of 3 per herd), are now **open**, via Manage Your Herd, and will close on **Sunday 30<sup>th</sup> January** or when the maximum number of entries are received. £27+VAT per Entry.

***For those Herds that have retained their entries from 2020, during the period above, you will be able to add additional entries, subject to the number of places available. (Emails will be sent shortly)***

Entries will reopen on **Monday, 7<sup>th</sup> February**, closing at midnight on **Sunday, 27<sup>th</sup> February**, during which time you will be able to select your alpacas but the total number of entries you reserved, must remain the same.

There will be no refunds and we will not accept withdrawals, except due to illness under the usual conditions.

We will be including Modern Grey as Classes at the Fiesta again this year. Best Appaloosa will be awarded at the Show but the latter must be entered under the Multi/Fancy Class in 'Manage Your Herd'.

**All Extras need to be booked direct with HoEAG via the Order Form available on our website [www.heartofenglandalpacagroup.co.uk](http://www.heartofenglandalpacagroup.co.uk). Electric Points at £30 each - maximum of 4 fans per supply and compulsory Pen Clean Up Service at £40, which will be refunded if you decide to do it yourself.**

In addition, you may book a **Sales & Stud Pen**, to house a maximum of 4 alpacas per Pen, available at £30 each. Bring along a selection of alpacas that you have for sale or boys to promote your Stud Services. Your Herd Name will be listed in the Catalogue, on our Website and Facebook page.

**Sponsorship opportunities are available, please email [fiesta@heartofenglandalpacagroup.co.uk](mailto:fiesta@heartofenglandalpacagroup.co.uk)**

**The HoEAG thank you for your support and wish you good luck at the Fiesta.**

## 2021 Event Diary



If you need information about any of the events listed below then please email Duncan using [ceo@bas-uk.com](mailto:ceo@bas-uk.com)

|           |        |                                  |
|-----------|--------|----------------------------------|
| Saturday  | 22-Jan | Affiliate Course - Devon         |
| Saturday  | 22-Jan | Affiliate Course - Suffolk       |
| Saturday  | 22-Jan | Affiliate Course - Hertfordshire |
| Sunday    | 23-Jan | Affiliate Course - Devon         |
| Sunday    | 23-Jan | Affiliate Course - Suffolk       |
| Wednesday | 26-Jan | EAG winter warmer- natural dye   |
| Monday    | 31-Jan | Affiliate Course - Suffolk       |
| Tuesday   | 01-Feb | Affiliate Course - Suffolk       |
| Saturday  | 05-Feb | Affiliate Course - Devon         |
| Sunday    | 06-Feb | Affiliate Course - Devon         |
| Saturday  | 19-Feb | Affiliate Course - Suffolk       |
| Sunday    | 20-Feb | Affiliate Course - Suffolk       |
| Thursday  | 14-Apr | Affiliate Course- Staffordshire  |
| Tuesday   | 01-Mar | Affiliate Course - Suffolk       |
| Wednesday | 02-Mar | Affiliate Course - Suffolk       |

If you would like your BAS, Educational or Regional group **event** included in this section (not shows) please send details to Duncan.

## 2021 Show Diary



### Make a note in your diary!

(New information in red)

Breeders considering entering more than one fleece show may need the organisers of one show to forward the fleece(s) to the next show the fleeces are entered for. Please could entries to multiple fleece shows advise the organisers of the plan to ensure they know those entries need to be despatched asap to the next show. Please ensure that all the necessary entry forms are included in the box separately from the forms for the first shows.

#### **National Show**

Date: 25th, 26th and 27th March 2022

Judges: Mrs Mary-Jo Smith and Mr Tim Hey

Venue: Telford International Centre

**Named entries from 1st Feb for 1 week**

Organiser: Duncan Pullar 07496 578781, [ceo@bas-uk.com](mailto:ceo@bas-uk.com)

#### **NWAG Halter Show**

Date: Saturday 2nd April 2022

Judge: Mary-Jo Smith

Venue: Borderway Mart, Carlisle.

#### **HoEAG Spring Alpaca Fiesta 2022**

Show Dates: Friday 8th, Saturday 9th & Sunday 10th April 2022

Judge: Barbara Hetherington

To be held at Bury Farm Equestrian Centre

### **Scottish Alpaca Championship**

Dates; 23rd and 24th April 2022

Judge: Barbara Hetherington

Venue: Lanark Auction Market

Entries open: 18th February 2022

Entries Close: 24th March 2022t

Entry fee: £22 inc VAT

Organiser Stuart Ramsay

### **South of England Spring Live Alpaca Halter Show.**

Dates: Saturday 23rd April & Sunday 24th April 2022

Judge: Jay Holland

Venue: South of England Showground, Ardingly RH17 6TH

Organisers: Tony & Hilary Monkcom [hilary@pinnaclealpacas.com](mailto:hilary@pinnaclealpacas.com)

### **CCA Cornwall Fleece Show 2022**

9th July 2022

Venue and Judge tbc.

### **EAG Fleece Show**

August 2022 further details tbc

### **SWAG Halter & Fleece Show**

Dates: 17th & 18th September 2022

Venue: The Somerset County Show 1 @ Taunton Racecourse

### **EAG Halter Show**

October 2022 further details tbc



© 2021 British Alpaca Society, All rights reserved.

Any pictures used are kindly provided by the members and no bias is inferred by their use.