



BRITISH ALPACA SOCIETY

Show Rules Manual

TWELTH EDITION

JANUARY 2015



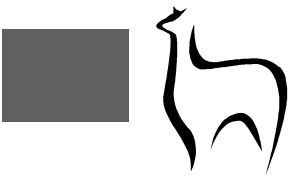
Contents	Page
Alpaca Skeleton and Anatomy	3
Definitions	4
The Show Organiser and Stewards	5
The Exhibitor and Handler	9
The Judge	12
Halter Show Classes	14
Shorn Fleece Classes	19
Guide to the Judging of Halter Classes	20
Guide to the Judging of Fleece Classes	22
Class Divisions and Numbering	24
Awards and Championships	30
Composite Shows	33
Appendix A: Other duties of Show Stewards	34
Appendix B: Inspection Steward's Checklist	35
Appendix C: Preparing an Alpaca for Showing	37
Appendix D: Preparing an Alpaca fleece for Showing	38

These rules have been developed to form the basis for all Alpaca Show classes held in the UK. Show Organisers, Secretaries and Stewards are asked to follow these guidelines to ensure consistency between all events.

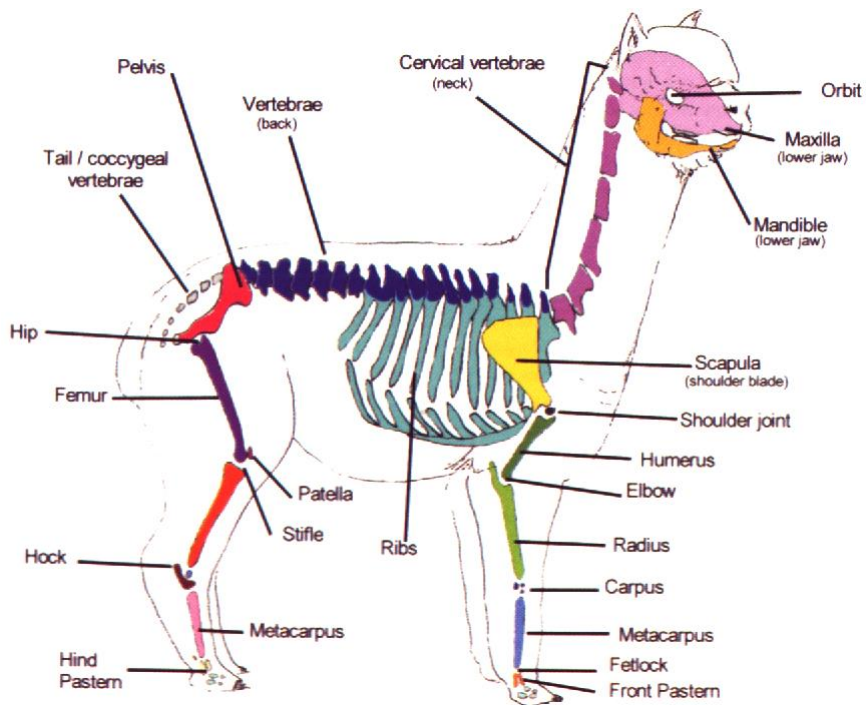
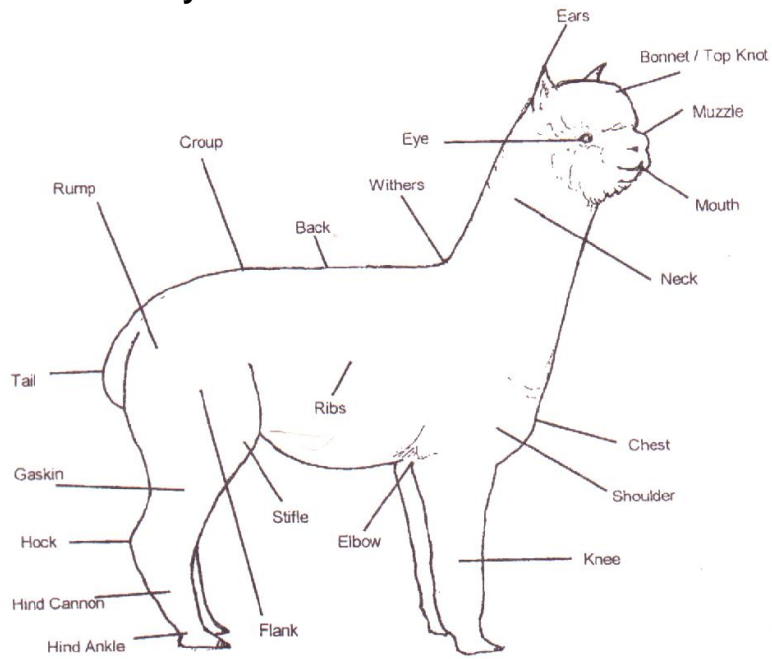
Further information and detailed explanations are provided in training courses held by the BAS throughout the year. Inquiries as to places on these courses should be made to the BAS office.

The BAS would like to acknowledge and thank Amanda VandenBosch, The Australian Alpaca Association and Cameron Holt for their contributions to this manual, and also BAS Judges and Show Organisers.

Amendments for 2015 are shown in red and are summarised on page 39-40



Alpaca Skeleton and Anatomy





Definitions

The Judge:

Person hired by the Show Secretary to assess Alpacas and apply judging criteria in an impartial manner and to determine winners and placings of Alpacas in all classes presented to them.

The Show Organiser:

Person responsible for the organisation of the alpaca classes at a Show.

Stewards

The Chief Steward:

Person responsible for the conduct of the Show and Show day(s) and for the activities of all Stewards. The Chief Steward may also perform the role of Inspection Steward and be responsible for inspecting the Alpacas prior to commencement of judging.

The Collecting Ring Steward

Person responsible for standing at the entry into the show ring from the alpaca collecting ring. His/her role is to ensure that all exhibitors' alpacas are present and in exhibitor number order for the following two classes to be judged.

The Fleece Steward:

Person who co-ordinates and oversees fleece entries at a Show.

The Inspection Steward:

Person appointed to inspect Alpacas prior to commencement of judging.

The Pen Steward:

Person responsible for ensuring all Alpacas in the Show are installed in their correct pens. The Pen Steward is also responsible for ensuring that all Exhibitors are ready and waiting with their Alpacas for their respective classes.

The Ring Steward:

Person who directs Exhibitors into and around the ring for judging. The Ring Steward also assists Judge with restraining an animal, if necessary, during hands on inspection.

Exhibitors

The Exhibitor:

Person or partnership by whom the Alpaca is being shown.

The Handler:

Person who handles and displays Alpacas in the show ring. May be someone other than the registered owner. Must be over the age of 11 years.

The Owner

Person or partnership in whose name the Alpaca is registered with the British Alpaca Society.



The Show Organiser (Halter or Fleece Show)

The Show Organiser is the person responsible for the organisation of the alpaca classes at the Show.

Responsibilities include:

1. Deciding whether the Show will be run with Age Championships or Colour Championships.
2. Appointing Show Stewards and working closely with them to ensure the smooth running of the Show.
3. Hiring the Judge and assigning a person to act as liaison with Judge to assist with details of transport, lunches, accommodation, etc. Arranging a location for the Judge's breaks/lunch away from Exhibitors.
4. **It has been agreed by the Judges panel and the Shows Committee that £150 per day is paid to the judge in a BAS show and this will be raised by the show organiser.**
5. Writing of the show catalogue – classes and divisions, and its distribution as necessary.
6. Production of an Inspection List of all Alpacas attending Show for use of the Inspection/Chief Steward.
7. Promoting and publicising the Show.
8. Liaising with Grassroots to allow on-line entries and encouraging on-line entry where possible.
9. Ensuring the judging of the show classes is completed in the time available, which may necessitate controlling entry numbers at some larger shows.
10. Recording entries and supplying the Chief Steward with information to allow the Chief Steward to allocate pens.
11. Recording all results, in both halter and fleece divisions, to include the number of animals presented in the ring for each class.
12. Announcing, or appointing an announcer to announce, classes.
13. Supplying the British Alpaca Society with a copy of the show catalogue prior to the Show.
14. Supplying the British Alpaca Society with detailed show results after the Show.
15. Judges contracts should be issued and are available on the BAS website under BAS Judges
16. Judges feedback forms are available on the BAS website under BAS judges and should be completed by the show organiser and returned to the BAS Breed Secretary.

The Chief Steward

The Chief Steward is responsible for the conduct of a show day and for the activities of other Stewards. Chief Stewards must all have a clear understanding of the current BAS Show Rules.

Stewards officiating at any BAS Show may exhibit or own Alpacas entered in classes at that Show, but must withdraw from the ring or the fleece judging area for any class in which their entries are being Judged. The Chief Steward will arrange for another Steward to take on the withdrawing Steward's duties during the Class in question. The Chief Steward may appoint assistant Stewards as required.

Responsibilities include:

1. Allocation of pens
It is the Chief Steward's responsibility to ensure that the exhibitors pen their alpacas correctly in the allocated pens. No animals may be moved from pen to pen without the permission of the Chief Steward.
2. Animal inspections
Before judging commences, each Alpaca shall be inspected by either the Chief Steward or Inspection Steward, whichever is appointed at that show. Only the Exhibitor showing the Alpaca (or



a nominated representative), the Steward and a person validating the information shall be allowed in the pen during inspection. Neither the Chief Steward nor the Inspection Steward may inspect their own Alpacas.

3. Enforcing good conduct and ensuring that handlers wear suitable clothing/footwear in the show ring. He may direct the removal of an Alpaca or person from the Show on the grounds of bad conduct at his absolute discretion.

The Fleece Steward

The Fleece Steward/Fleece Co-ordinator (at larger shows there may be a number of Fleece Stewards and one Co-ordinator overseeing all) is appointed to:

1. Record all entries arriving at Show.
2. Weigh each fleece and enter correct weight on entry form.
3. Verify colour category.
4. Verify age category.
5. Arrange fleece judging area:
 - a) correct lighting
 - b) correct table height for Judge
6. Work with the Judge recording scores.
7. Oversee that:
 - a) all fleeces are placed back in correct boxes and/or bags.
 - b) score cards are left with each fleece
 - c) rosettes and sashes are awarded

Inspection Stewards

Inspection Stewards must be able to demonstrate the ability to identify the points on the Inspection Steward's Checklist (see Appendix B). The administrative instructions to all exhibitors prior to the Show will say "Inspections will be carried out in accordance with the Inspection Steward's Checklist at _____ and any questions will be referred to the Chief Steward for resolution".

Inspection Stewards are responsible for checking:

1. Correct identification: The BAS ear tag or microchip will be examined to ensure that the Alpaca corresponds with the entry in the show catalogue.
2. Correct Alpaca entry – age division / breed: huacaya or suri, halter or shorn, sex (entire or gelded) and correct class number.
3. Correct colour per colour chart. Colour should normally be checked on the mid-side only unless there are obvious colour differences visible to avoid disturbing the fleece structure.
4. Good health and clear of any faecal and urinary contamination, particularly under the tail (in the case of concerns, contact the Chief Steward who will seek veterinary advice).

All inspection records need to be collated with the Show Organiser and master copy of the show programme prior to the Exhibitors' meeting at the beginning of the show. Inspection Stewards are not empowered to disqualify any Alpaca but should refer problem issues to the Chief Steward. Inspection Stewards should not enter individual pens for biosecurity reasons.



The Ring Steward

The Ring Steward is appointed to:

1. Liaise with the Collecting Ring Steward to verify the number of alpacas entering the ring and that they are in the correct class.
2. To inform the judge of the next class(es) and the number in that class(es)..
3. Assist the Judge with restraining any Alpaca, if necessary, during hands-on inspection.
4. Assist the Judge in asking Handlers to move Alpacas in line during judging.
5. **Once the Judge has made the final placing, the Ring Steward will record the number and pass this onto the judge for checking and signing before carrying out his oral reasons. This information will then be passed on to the announcer, who will announce the placing of the class after the Judge has given oral reasoning (if placings are announced before Championships are awarded (excluding Supreme awards) exhibitors should only be identified by their catalogue entry number). These results will then be passed on to the Show Secretary, who will record all results of the Show.**
6. Check that the Handlers or alpacas are wearing the correct numbers.
7. The Ring Steward cannot contribute to the decision-making process.



The Exhibitor and Handler

1. Registration and Identification of Alpacas

All Alpacas must be properly registered with the British Alpaca Society and must be easily identifiable as such by the Inspection Steward. The onus of proof is on the Alpaca owner/handler. For BAS registration, an Alpaca must have an **implanted microchip** and a **BAS ear tag (whether inserted or produced by the exhibitor)**. The tag must bear the full BAS code (eg, ABCBASUK00001) and this tag must be assigned to the Alpaca concerned. For the avoidance of doubt, the only means of confirming that the identity of an Alpaca conforms to the Registry records is as follows :-

- a) That the Alpaca has a tag with the correct BAS tag number, in the correct format (and no other BAS tag) **AND** bears an implanted microchip of the correct number. (If 2 or more microchips are found, they must relate specifically to the alpaca concerned.)
- b) The Alpaca has a tag with the correct BAS tag number in the correct format (and no other BAS tag) **AND NO** microchip can be detected. (*)
- c) The Alpaca bears one implanted microchip of the correct number **AND NO** BAS tag is present.

Alpacas will be considered **unidentifiable** if:

- a) They do not have either a valid BAS tag or microchip present and detectable.
- b) They have the correct BAS tag present but the microchip number is wrong.
- c) They have no tag and the microchip, if present, is wrong.

Exhibitors are strongly advised to check, prior to the Show, that the microchip is present, correct and readable. This should be checked prior to arrival at the Show. Non-compliance may lead to disqualification.

NB. An Alpaca found at a Show with no BAS tag, and no detectable microchip, will be ineligible for entry until the owner has implanted a microchip and the registry notified by the show organiser and owner.

2. Ownership of Alpacas

A person or a farm, or partnership, who at the time of the Show, is not the person or farm in whose name the animal is registered with the British Alpaca Society, is ineligible to exhibit that animal unless a signed statement is lodged with the Show Secretary confirming they are acting as the owner's agent.

3. Disqualified Alpaca

An Alpaca is disqualified from competition at a Show for the following faults or irregularities:

- a) Fleece length is either too long or too short for entered division.
- b) More or fewer than two toes (polydactylism).
- c) Fusion of toes (syndactylism).
- d) Fused ears, gopher ears.
- e) No tail, abnormally bent or kinked tail.
- f) Parasite infestation.
- g) Ectopic testicles.
- h) Incomplete, improperly formed or incorrectly proportioned genitalia.
- i) **Wry face**
- j) **Animals considered emaciated will be disqualified**

An Alpaca is also disqualified from showing if:

- a) the Show Judge has any direct or indirect financial interest in the Alpaca. This includes the sire in sire's progeny, the dam in dam's progeny and any of the progeny.
- b) the Alpaca, during the 6 months prior to the date of the Show, has been:



- i) boarded on a property under the Judge's control (not including for breeding purposes).
- ii) purchased from the Judge.
- iii) trained by the Judge.
- iv) purchased from or agisted with the appointed judge of the show, or the appointed judge has acted as consultant, agent or broker for the purchase of the alpaca.

4. **Cria at Shows**

No cria under 6 months or unweaned shall be allowed to attend any show. Any Exhibitor breaking this rule will be disqualified from the show. Upon a second offence the Exhibitor will be barred from all shows for a 12 month period.

5. **Previous Dealing with the Judge**

An Exhibitor or handler, including his/her immediate family members, will be disqualified from handling any Alpaca in the ring in front of a Judge if:

- i) During the six months prior to the Show, he/she has received from or paid to the Judge any fees (not including stud fees), salary, commission or any kind of remuneration or benefit for selling, buying or agisting Alpacas.
- ii) They co-own an Alpaca with the Judge.
- iii) They are a domestic partner or immediate family.
- iv) They are a business partner.

NB. If the Exhibitor is disqualified from personally showing in front of the Judges, he/she may appoint a handler to show an eligible Alpaca on their behalf.

6. **An Exhibitor must assist in inspection**

An Exhibitor or his/her nominated representative, who is unavailable to assist in the inspection of his/her Alpaca(s) at the designated inspection time, may be disqualified.

7. **Entry to the Show Ring**

No person, other than Officials and Exhibitors with their Alpacas, shall enter the show ring after judging of the first class of the Show has begun, except

- a) With the consent of the Judge; or
- b) At the direction of the Judge or Chief Steward/Ring Steward.

8. **Animals remain in ring until judging of class complete**

No person or Alpaca shall enter or leave the judging ring during or after judging of a class begins and awards for that class have been completed and been presented except:

- i) With the consent of the Judge
- ii) At the direction of the Judge or Ring Steward.
- iii) At the direction of the Chief Steward.
- iv) A class may not be re-judged after the last rosette has been awarded.

In the case of prize-winning Exhibitors and their animals, all shall remain in the judging ring until completion of the Judge's oral reasons.

9. **Movement of animals during the show**

No animals may be moved from pen to pen without the permission of the Chief Steward. Exhibitors may not remove their animals from the show pens until judging for the day has been completed.

Breach of this rule may result in a fine of up to £250.



10. **Behaviour of Exhibitors**

Every Exhibitor, animal handler and groom of Alpacas at a Show shall **behave respectfully at all times for the duration of the Show** toward the Judge, Show officials and other persons involved in Alpaca classes and the general public.

Conduct should reflect the public nature of the show-ring, and as examples: eating, smoking, chewing gum and the use of mobile phones are not permitted. The Judge will be the sole arbiter in cases where conduct does not comply with these requirements, and has the right to ask for the removal from the ring of offenders as a last resort. Handlers should not address the Judge except in response to a request from him/her.

11. **Period of Exhibition**

Alpacas must be penned by the date and time specified by the Show Organiser in readiness for inspection and judging and may not be removed from the showgrounds until the date and time specified by the Show Organiser.

12. **Preparation of Alpacas and Cleanliness of Stalls**

Exhibitors must keep the stalls allotted to their animals clean, and give proper attention to their stock throughout the Show. Exhibitors must provide their own feed, and feed and water containers.

13. **The Handler**

The Handler of an Alpaca in the judging ring shall remain with the Alpaca until judging has been completed, unless the Judge authorises a change of Handler or removal of the Alpaca from the judging ring due to the Handler's inability to control it.

14. **Handler's Attire**

A Handler shall be neatly attired with a white coat, suitable footwear, and be well-groomed. He/she shall clearly display the correct Exhibitor number.

A Handler shall be deemed to be incorrectly attired, if his/her dress displays any matter identifying the Alpaca or advertising farm or breeder.

15. **Non-attendance at the show**

Entry fees must be paid prior to the date of the show and no refunds will be made for any entries (alpacas or fleece) withdrawn after the closing date.

Any exhibitor entering a show who does not attend with his/her alpacas or fleece shall be charged a non-attendance fee of up to £250 unless the show organiser has been notified at least 48 hours before the show is due to begin. This £250 non-attendance fee is to be at discretion of the show organiser and chair of the BAS Show Committee.



The Judge

1. The Judge shall not be a house guest of any Exhibitor within the week prior to or during the Show.
2. The Judge shall not socialize with Exhibitors until completion of the Alpaca judging, but may attend approved Exhibitor functions provided that he is accompanied by a designated Show official.
3. The Judge of Halter or Fleece classes shall be subject to the following conditions whilst judging a Show. He shall:
 - i) be allowed to enter an Alpaca in an auction at that Show.
 - ii) Take all reasonable steps to ensure that any Alpacas in which he has a direct or indirect ownership interest in shall not be entered in that Show.
 - iii) not market his own Alpacas either personally or via the distribution of printed material, trade stands or advertising banners at that Show.
4. A fleece Judge may not exhibit his fleeces at a Show at which he is judging fleeces, or fleeces in which he has any direct or indirect interest but a halter Judge can exhibit his fleeces in that fleece show. A fleece Judge can exhibit Alpacas at a Show he is judging provided that another Judge is judging such halter classes.
5. A halter Judge can exhibit an Alpaca in halter classes in a Show at which he is judging halter classes, provided that another Judge is appointed to specifically Judge that breed type.
6. Judges should arrive no more than one hour prior to the pre-Show Exhibitors meeting, unless the Judge is attending an approved event. The Judge shall not enter into conversation with anyone other than a Show official or ring Steward either before or during the Show other than during the Exhibitors meeting prior to the Show.
7. Judges may attend Show-related events provided that they do not enter into conversation about Alpacas. They may attend:
 - A. Show dinner.
 - i) The dinner is an official function of the Show.
 - ii) Nobody at the Judge's table can be an Exhibitor or handler at the Show.
 - B. Seminars. The Judge may conduct seminars or presentations before or during the Show at which he is judging. However the following guidelines must be observed.
 - i) The subject matter of the presentation shall be informative or educational.
 - ii) Contact with Exhibitors and handlers must be limited to a brief greeting.
 - iii) Any presentation cannot include Alpacas that are entered in the halter show.
 - iv) The Judge will leave the seminar immediately at the conclusion of the presentation.
8. The Judge will not examine any show-related catalogue/book that comes to his attention by any means until the judging of that Show is completed. Prior to the Show, the Judge shall not view, inspect or have contact with Alpacas entered into the Show.
9. Only personnel approved by the Show Organisers may enter the ring with the Judge.
10. The Judge may direct the removal of an Exhibitor from the ring at his absolute discretion.
11. The Judge may direct the removal of any Alpaca from the show ring if he considers such Alpaca to be unsound, stressed or unfit to compete.
12. Class placements are at the absolute discretion of the Judge. If the Alpacas in any given class do not meet the standard of other Alpacas in the Show, the Judge may start the awards with either a 2nd or 3rd place or not award a rosette at all. In such cases the 2nd or 3rd placed animal is ineligible to



compete in Championship classes.

13. Once the judge has made the final placing, the Ring Steward will ensure that the judge has signed off the results before passing them to the announcer.
14. Re-judging of classes is not permitted. However, where an animal is presented in an incorrect class and judging of that class has not yet been completed it may be moved to a SUBSEQUENT class.
15. Whilst the Judge's decision is final, if an Exhibitor considers the Show Rules or Show Procedure has not been followed correctly, he may lodge an appeal within 30 minutes of the completion of the judging of the relevant class, together with a £20 deposit. The appeal shall be heard by the Chief Steward and the Judge acting together. The £20 deposit will be forfeit if the appeal is found to be frivolous. Any major dispute arising after the end of the relevant Show will be resolved by a Committee comprised of 2 Judges (not to include the Show Judge) and 2 representatives of the BAS Board. All parties concerned will have the opportunity to make written and or oral representations.
16. The Judge shall not make disparaging remarks regarding Exhibitors, Show management, other Judges, Exhibitors or their Alpacas.
17. The Judge shall not use his position in judging any Show to gain either personal or financial benefit or to provide benefit either personal or financial to any other person.
18. The Judge must evaluate the Alpaca and ignore the owner or handler.
19. Prior to judging, all Show Judges must provide to the BAS Board:
 - i. A Judges Disclosure of Ownership Entities Statement. Such statement will be completed annually by all Judges, held by the BAS and will be made available to all Show Organisers upon request.
 - ii. The "Judges Disclosure of Ownership Entities" is defined as a list of all entities under which the Judge directly or indirectly owns or has an interest in Alpacas, including but not limited to partnerships, companies, joint ventures; also details of any third parties' financial interest in a Judge's Alpacas or businesses.
20. Judges are required to carry out their duties in accordance with the current BAS Show Rules Manual.



Halter Show Classes

BAS Shows will be conducted within one of two Show formats

1. Age Championships (see Age Championship categories). The Supreme Champion is chosen from the Age Champions only.
2. Colour Championships (see Colour Championship categories). The Supreme Champion is chosen from the Colour Champions only.

Class numbers are set out on pages 24–29 and will be the same in both show formats although the running order of classes may be different.

Class Division

Shows with fewer than 25 in a breed type

1. A minimum of three age and breed divisions should be maintained
Huacaya
a) Junior: 6 months up to 12 months.
b) Intermediate 12 months up to 24 months.
c) Adult and Senior Over 24 months.

Suri
a) Junior: 6 months up to 12 months.
b) Intermediate 12 months up to 24 months.
c) Adult and Senior Over 24 months.
2. It is recommended that there should be a minimum of 25 Alpaca entries to run a British Alpaca Society approved Show. It is desirable to have at least 4 entries per class.
3. When there are insufficient numbers to run individual colour male and female Championship : merge Gender Champions and still award all colour Champions. For example: White, Light, Fawn, Brown, Black and Grey Champions not White Male and Female Champion.

Reserve champions may be awarded at the show organiser's discretion.

Shows with 25 Alpacas or more in a breed

3. When there is a small number of entries in adult/senior classes, these should be brought into the ring at the same time but be judged separately.

Huacaya
a) Junior: 6 months up to 12 months
b) Intermediate: 12 months up to 24 months
c) Adult: 24 months up to 48 Months
d) Senior: 48 Months and older

Suri
a) Junior: 6 months up to 12 months
b) Intermediate: 12 months up to 24 months
c) Adult: 24 months up to 48 Months
d) Senior: 48 Months and older



For All Shows

4. **Class size**

All show placing is to be made in accordance with BAS Show Rules and guidelines.

Classes will be a maximum of 12. If there are 13 or more in a class, it will be split equally by age, with a maximum of 12 in each division, with placing's awarded to 6th place

5. In the event that there is only 1 or 2 entries in a class, more than one class may appear in the ring together. Classes will be judged separately and placed according to the Judge's discretion.

6. Sex division

- a) Female
- b) Male
- c) Gelding/Wether

7. Age cut-off for class entry – on the birth date of the Alpaca it shall move to the next class (*example: If born on 18/06/2003, on 18/06/2004 the Alpaca moves into the intermediate class*). In a show extending for more than one day, the age of an animal is taken as its age on the first day of the show.

8. **Fleece Length**

If the fleece does not comply with the following, the Alpaca shall be disqualified from the halter class. If the fleece is too short it may be entered in a shorn class.

Huacaya

Minimum of 50 mm (2 inches) and maximum of 150 mm (6 inches) on blanket. Poodle or lion cuts are not permitted.

Suri

Minimum of 75 mm (3 inches) and maximum of 450 mm (18 inches).

Suri alpacas cannot be shown in the Adult/Senior class in their first fleece

N.B. Junior and intermediate Alpacas in their first fleece, are not subject to a maximum fleece length.

A Short Fleece Show is a conventional halter show with a reduced minimum fleece length requirement.

For a short-fleeced show, the minimum length for huacaya alpaca fleece shall be 25 mm (1 inch) and Maximum of 50mm (2 inches). For suri alpacas, the minimum length shall be 50mm (2 inches) and the maximum is 100mm (4 inches). This does not apply to suri or huacayas in the junior and intermediate classes.

The published show results must state that they are from a short-fleece show.

9. **Shorn Alpaca Classes**

The same rules shall apply to shorn Alpaca classes as those applied to fully fleeced Alpacas, with the addition of the following:

Alpacas will be Judged 100% on conformation.

The staple length on the blanket must not exceed 25 mm (1 inch) for huacayas and 50 mm (2 inches) for suris.

10. **Junior Handler Classes**

These classes may be held at the Show Organisers discretion.



11. **Sire's Progeny Class**

This class is for three progeny by one sire. Entries cannot contain a wether, but may be a group of males, females or both. None of the progeny may be younger than six months. Progeny need not be owned or bred by one Exhibitor, but all must be the progeny of the one named sire. Each entry must be from a different dam. All progeny must also have been separately entered in another class for Alpacas at the Show in question. No more than three groups of progeny may be entered to represent a single Sire.

12. **Dam's Progeny Class**

This class is for two progeny from one Dam, each from a different Sire. There should be at least 11 months difference in age between the two progeny. All additional conditions, as in 11 above apply.

13. **Colour Groups**

In accordance with the colour chart

Huacaya and Suri

White (solid)

Huacaya and Suri

Lights – beige and light fawn (solid)

Huacaya and Suri

Fawn – medium and dark (solid)

Huacaya and Suri

Brown - Light, medium and dark (solid)

Huacaya and Suri

Black (solid)

Huacaya and Suri

Grey- Light, medium, dark and rose

Huacaya and Suri

Multicoloured

14. **Colour definitions**

Colour spot: An area of contrasting colour measured at the skin.

A solid colour alpaca is:

- 1 An alpaca with no secondary colour spots
- 2 An alpaca containing no more than one colour spot in the blanket area that is not greater than 2 inches (50 mm) at its largest dimension
- 3 An alpaca that contains no more than two colour spots not greater than 2 inches (50 mm) anywhere on that alpaca, provided that no more than one spot of such dimension is located in the blanket area
- 4 **Definition of Contrasting colour: to be considered contrasting the two colours need to be found at least two colours apart on the colour chart. For example a white alpaca with a dark fawn spot would be considered as contrasting.**
 - a) **A white alpaca with fawn on its head will not disqualify the alpaca from the white class but it will be considered as lack of colour uniformity.**
 - b) **An apparent white alpaca with a beige or fawn backline fading to a lighter class will be judged in the light class but will be considered as lack of colour uniformity.**



- c) A beige alpaca with medium fawn on the head and or backline will not disqualify the alpaca from the light class but will be considered as lack of colour uniformity.
- d) If any one contrasting patch is more than six inches (150 mm) in its largest dimension anywhere on the alpaca then it shall be judged in the multi class

5 Light fawn and beige should be incorporated into a class termed lights

6 Grey:

- a) A light, medium or dark grey alpaca is defined as displaying a uniform mix of white and black fibres evenly distributed throughout the fleece, with some white markings (patches) on the face and throat. The uniformity of the overall grey appearance will be assessed in the same manner as a solid fleece.

Photos of grey alpacas will be made available on the BAS website.

Spots as mentioned in Rule 14 do not apply here.

- b) A light medium or dark rose grey Alpaca is defined as displaying a uniform mix of predominantly brown and/or fawn, white and/or black fibres evenly distributed throughout the fleece with some white markings (patches) on both the face and throat. The uniformity of the overall grey appearance will be assessed in the same manner as a solid fleece.

7 Multicoloured:

Multicoloured Alpacas are Alpacas that do not fit into other colour classes.

15. Class entry numbers

As a guideline to Show Organisers, it is recommended that:

For a one-day show with one judge, the maximum number of halter class entries shall be 140

For a one-day show with two judges and two rings, the maximum number of halter class entries shall be 280.

For a two-day show with one judge, the maximum number of halter class entries shall be 280.

For a two-day show with two judges and two rings, the maximum number of halter class entries shall be 560.

For a fleece show with one judge, the maximum number of entries that can be judged in one day shall be 60.

Note: The above alpaca entry numbers allow for the championship and progeny classes in addition.

16. Class numbering

The class numbers are coded as follows:

First digit – Style

- 1 Huacaya
- 2 Suri
- 3 Huacaya fleece
- 4 Suri fleece

Second digit – Sex and age

- Even number Female
- Odd number Male
- 0 & 1 Junior
- 2 & 3 Intermediate
- 4 & 5 Adult
- 6 & 7 Senior

Third digit – colour

- 0 White
- 1 Fawn
- 2 Brown
- 3 Grey
- 4 Black
- 6 Lights

For the purposes of the Show, classes can be sorted in any order.



Entering Alpacas in the Halter Show

The Alpaca Show will be conducted under the British Alpaca Society Show Rules. It is recommended that important rules are reprinted in the Show schedule.

The Show schedule should clearly state that:

1. The Chief Steward has the ultimate power to:
 - a) Classify all entries for colour (in accordance with the colour chart)
 - b) Inspect all exhibits for identity
 - c) Disqualify for serious faults as stated in *disqualifying faults*.
2. The Chief Steward has the power to transfer an exhibit to another class if deemed appropriate in his/her opinion.
3. The Show schedule shall print the following information:

The Inspection Steward will inspect Alpacas commencing at (time) on(day).
If Alpacas are not in their allocated pens and available for inspection at this time they may be disqualified.
Exhibitors must be in attendance at the time of inspection.

Halter Entry Form and Rules

The following information must be given by the Exhibitor on the Alpaca entry form.

1. Alpaca name and microchip number.
2. British Alpaca Society ear tag number.
3. Date of birth of Alpaca, colour, sex and huacaya / suri classification.
4. Name of sire and dam of Alpaca, including identification numbers.
5. Signed declaration by Exhibitor stating all information contained therein is true and correct.
6. Signed health declaration.
7. Class number for exhibit entry, if required.

Show Ring Rules

1. All Alpacas will be examined by the Chief Steward or Inspection Steward prior to entering the show ring.
2. Late entries may be refused at the sole discretion of the Show Organiser, whose decision shall be final.
3. All Alpacas entering the show ring shall have correctly fitting halters and lead line.
4. No ornaments, tassels or farm names to be displayed.
5. Handlers shall be neatly attired with a white coat, bearing no farm identification. Long trousers and closed-toe footwear are recommended.
6. Alpacas should be trained to be led on halter and stand for the Judge to examine teeth, fleece and conformation. Unruly Alpacas can be disqualified or placed lower if Judge cannot examine them properly.
7. Presentation: the Alpaca should be presented in a clean, well presented but 'natural' manner (see page 36).
8. Any drugs designed to affect an animal's performance may not be used at a show.
9. **Handlers must not refer to their animal by name in the show ring.**



Shorn Fleece Classes

1. Any fleece entered must have been sheared in the 18 months prior to the Show.
2. Entries are restricted to one fleece per alpaca per show which must be the most recently sheared fleece.

3. Fleece Class Entry Form and Rules

The following information must appear on the Alpaca fleece section entry form for all Shows:

- a) Name of animal and identification.
- b) Date of birth.
- c) Accurate date of shearing.
- d) Accurate total months fleece growth.
- e) Class no/age division at time of shearing.
- f) Colour.
- g) Breed division.
- h) Signed declaration by the Exhibitor, stating that all information contained therein is true and correct.

To be stated in show schedule:

Fleeces are to be lodged with the Fleece Steward at the showground by (time) on (date).

All fleeces being shown must be the property of the Exhibitor.

4. Breed Divisions

Huacaya
Suri

5. Age Divisions for Alpacas at Time of Shearing

Junior: 6 months to 12 months
Intermediate: over 12 months to 24 months
Adult: 24 months to 48 months
Senior: 48 months and older

Where classes are split, this should be by sex.

6. Fleece lengths for showing

Huacaya fleece must be a minimum fleece length of 50 mm (2 inches). **Maximum fleece** length to be no more than 150 mm (6 inches). First fleeces in junior and intermediate classes are not subject to maximum fleece length.

Suri fleece must have a minimum fleece length of 75 mm (3 inches). **Maximum fleece** length be no longer than 450 mm (18 inches). First fleeces in junior and intermediate classes are not subject to maximum fleece length.

7. Fleece Colour Classifications

An Alpaca fleece is to be shown in the appropriate colour class, when it is predominantly that colour. Any colour variations will be assessed at time of inspection.

A predominantly grey Alpaca fleece (grey, rose grey) is to be shown in a grey class, whether or not it has any other coloured spots present, and any colour variations will be assessed at the Judge's discretion.

Fleeces shall consist of the prime fibre only and shall be displayed full and intact and should be skirted and displayed cut side out. The fleeces must be displayed in clear plastic bags with no farm identification.

Fleece entries shall be judged by Exhibitor number only.



Guide to the Judging of Halter Classes

In the show ring, Alpaca judging will be scored as follows:

- 60% Fleece
- 40% Conformation

Judging will be done on a *comparative* basis, using the list of positive/negative traits in accordance with the percentages above.

40% Conformation

The Alpaca will be examined thoroughly for conformation, balance and movement as it walks into and around the ring. There will be a hands-on examination for bite, head, top knot, eyes, top line and reproductive organs.

The Alpaca will be asked to walk into the ring directly towards the Judge, and move on past and away from the Judge. At this time the Judge will assess the following:

Conformation, type and soundness

1. Balance and free movement
2. Size and proportion of body for age
3. Substance of bone
4. Presence
5. Top line
6. Tail set
7. Leg angulation, both front and hind
8. Width and depth of chest
9. Body condition

Phenotypic appearance should reflect breed type – Huacaya or Suri.

Fibre should cover the entire body, with the exception of eyes, muzzle, mouth, belly, genital area, udder and inside of legs and arm pits.

Head, ears, muzzle, teeth, overall appearance and posture should be true to type.

Once the Alpaca has been assessed moving, the Alpaca will be asked to stand. At this time the Judge will examine the overall balance, presence, preparation and presentation of the Alpaca.

The Alpaca will be examined standing still from the front, side and rear. Conformation will be assessed again at this point.

The Alpaca will then be examined hands on – a hand will be run down the top line to check for any abnormalities. To allow the judge to examine the teeth and jaw, the Alpaca's lips will be parted by the handler or, if necessary, by the ring steward, who will then disinfect his/her hands. The eyes, ears and head will also be evaluated at this time.

Once the conformation has been assessed, the fleece will be examined.



60% Fleece

The fleece will be examined in a minimum of three areas: shoulder, mid-side and rump. The fleece will be evaluated on the following:

1. Handle (the tactile feel).
2. Lustre or brightness, the gloss or shine in the fibre.
3. Density of blanket, indicated by the number of fibres per square unit area, and visually by the amount of skin exposed when the fleece is parted. Density should be consistent throughout the fleece.
4. Fineness of fleece, the comparison of different diameters of fibre within the fleece. Uniformity of fineness of prime fibre with lack of coarser fibres (guard hair).
5. Uniformity and consistency of fibre and individual locks.
6. Consistency of character/style reflective of breed type:
 - Huacaya: density and crimp.
 - Suri: lustre and lock.
7. Abundance of fibre.
8. Additional colours present in otherwise solid fleeces.

Oral Reasoning

After a Judge has placed the Alpacas in the class, he/she is required to give "oral reasons".

Oral reasons should be informative and educational and used as a positive tool. They should be given in an informative and clear manner to describe the traits of the Alpacas shown in that class.

Oral reasoning procedure

During the judging process, the Judge selects the Alpacas, weighing up their positive and negative traits, using the percentages: 60% fleece, 40% conformation.

The Judge will examine each Alpaca carefully and make selections. The oral reasons will be given to the spectators at the end of the class as the Alpacas are lined up and awards are being presented. It is important to have the Alpacas in front of the Judge as they are described.

The oral reasons should describe:

1. **Visual qualities** (that everyone can see).
Example: well balanced, good substance of bone, Alpaca head type, correctness of leg angulation, correctness of movement.
2. **Tactile qualities** (qualities that the spectator cannot see).
Example: softness of handle, uniformity of crimp, lustre, density.

As the Judge starts the oral reasoning, he/she should take time to thank the Exhibitors and spectators and describe what the class division is.

Example of expected oral reasoning for placement:

"Thank you for bringing this group of junior white males.

The Alpaca standing in first place moved freely around the ring today displaying correct conformation and good substance of bone. This male Alpaca exhibits excellent fibre coverage over his body, head and down the legs. His fleece has a soft handle with a defined and uniform crimp displayed throughout the blanket, shoulder and flank, with a lot of density.



This was a difficult decision and I do concede that the Alpaca in 2nd place also moved freely around the ring and is well balanced, exhibiting excellent coverage over body, head and legs. Both Alpacas have exceptional brightness to their fleece. However the Alpaca standing today in first place exhibited a softer handle of the two fleeces.

The Alpaca standing in third place has a very dense fleece with good uniformity and correct leg angulation and it is his leg angulation that puts him above my fourth-placed male. This male exhibits a broad crimp style which is uniform over his blanket and he stands over the fifth place alpaca for the character and uniformity of his fleece.

The fifth-placed alpaca has a pleasing head style, has very good fleece coverage and is well grown for his age. It is the size, stature and substance that place him above my sixth-placed alpaca. I grant that this alpaca is the youngest in the class and that his fleece has a soft handle but it did not have the brightness and character of those standing above him today.”

Guide to Judging of Fleece Classes

In developing this judging system, fleece quantity and quality have been given equal status. It is important that fleeces which are either "very pretty and no weight" or "very heavy and no style" do not gain advantage because of their style or weight alone, but have a good combination of both.

Aims

The aims of Alpaca Fleece Judging are to provide a competition which recognises those characteristics of Alpaca which are desired by manufacturers/processors and producers and enlightens those persons interested in the Alpaca industry. Judging will be conducted according to The *BAS Alpaca Fleece Judging Manual* prepared by Cameron Holt (2011 edition) which gives more details of the relevant rules and regulations.

Fleece preparation

The fleeces entered in Shows will usually be the skirted portion. They should be skirted of all short, stained and any extremely coarse fibre. Heavy vegetable matter should also be removed. Poorly prepared fleeces will receive penalties throughout the fleece judging.

Judging

1. Fineness and handle

This reflects the degrees of actual fineness of fibre displayed, expressed in microns, as well as taking into consideration various levels of softness.

When assessing fineness and handle, consideration should be given to the age of the animal or class in which the fleece is entered.

2. Uniformity of micron

The evenness of fineness/softness throughout the entire fleece.

3. Brightness (Huacaya)/Lustre (Suri)

The light refraction of the Alpaca fibre taking into account breed type.

4. Uniformity of colour

The evenness and regularity of colour throughout the entire fleece.

5. Character and Style (Huacaya)

The wave/crimp and crinkle within the lock relevant to Huacaya breed type.



(Suri)

The twist/wave within the lock relevant to the Suri breed type.

6. **Uniformity of length**

The uniformity of length throughout the fleece, taking into consideration commercial lengths for processing over 12 months growth period.

7. **Density**

The density of the individual staple or lock formation throughout the entire fleece.

8. **Lack of impurities**

Penalties are applied for excessive vegetable matter, staining within the fleece and/or any excessive tip damage. Tender fleece is also penalised.

9. **Lack of Guard hair**

The fleece should be as free as possible from broad, continuous coarser fibres (guard hairs).

Note: Age and class should be considered.

10. **Clean fleece weight**

The annualised weight of the clean fleece.



Halter Class Divisions and Numbering (Age Championship)

Huacaya Classes (Age Championship)

<p>Junior Female (6 months up to 12 months)</p> <p>100 White</p> <p>106 Light – beige and light fawn</p> <p>101 Fawn – medium and dark</p> <p>102 Brown – light, medium and dark</p> <p>103 Grey/Rose Grey – light, medium, dark.</p> <p>104 Black</p>	<p>Junior Male (6 months up to 12 months)</p> <p>110 White</p> <p>116 Lights – beige and light fawn</p> <p>111 Fawn – medium and dark</p> <p>112 Brown – light, medium and dark</p> <p>113 Grey/Rose – light, medium, dark</p> <p>114 Black</p>
<p>Intermediate Female (12 months up to 24 months)</p> <p>120 White</p> <p>126 Light – beige and light fawn</p> <p>121 Fawn – medium and dark</p> <p>122 Brown – light, medium and dark</p> <p>123 Grey/Rose Grey – light, medium, dark</p> <p>124 Black</p>	<p>Intermediate Male (12 months up to 24 months)</p> <p>130 White</p> <p>136 Lights – beige and light fawn</p> <p>131 Fawn – medium and dark</p> <p>132 Brown – light, medium and dark</p> <p>133 Grey/Rose Grey – light, medium, dark</p> <p>134 Black</p>
<p>Adult Female (24 months and up to 48 months)</p> <p>140 White</p> <p>146 Light – beige and light fawn</p> <p>141 Fawn – medium and dark</p> <p>142 Brown – light, medium and dark</p> <p>143 Grey/Rose Grey – light, medium, dark</p> <p>144 Black</p>	<p>Adult Male (24 months and up to 48 months)</p> <p>150 White</p> <p>156 Lights – beige and light fawn</p> <p>151 Fawn – medium and dark</p> <p>152 Brown – light, medium and dark</p> <p>153 Grey/Rose Grey – light, medium, dark</p> <p>154 Black</p>
<p>Senior Female (48 months and over)</p> <p>160 White</p> <p>166 Light – beige and light fawn</p> <p>161 Fawn – medium and dark</p> <p>162 Brown – light, medium and dark</p> <p>163 Grey/Rose Grey – light, medium, dark</p> <p>164 Black</p>	<p>Senior Male (48 months and over)</p> <p>170 White</p> <p>176 Lights – beige and light fawn</p> <p>171 Fawn – medium and dark</p> <p>172 Brown – light, medium and dark</p> <p>173 Grey/Rose Grey – light, medium, dark</p> <p>174 Black</p>
<p>Multi Class</p> <p>180 Male and Female, any age.</p>	<p>Progeny Class</p> <p>190 Three progeny by one sire.</p> <p>191 Two progeny from one dam.</p>
<p>Wether/Gelding Class</p> <p>195 18 months and over</p>	



Suri Classes (Age Championship)

<p>Junior Female (6 months up to 12 months)</p> <p>200 White</p> <p>206 Light – beige and light fawn</p> <p>201 Fawn – medium and dark</p> <p>202 Brown – light, medium and dark</p> <p>203 Grey/Rose Grey – light, medium, dark</p> <p>204 Black</p>	<p>Junior Male (6 months up to 12 months)</p> <p>210 White</p> <p>216 Light – beige and light fawn</p> <p>211 Fawn – medium and dark</p> <p>212 Brown – light, medium and dark</p> <p>213 Grey/Rose Grey – light, medium, dark</p> <p>214 Black</p>
<p>Intermediate Female (12 months up to 24 months)</p> <p>220 White</p> <p>226 Light – beige and light fawn</p> <p>221 Fawn – medium and dark</p> <p>222 Brown – light, medium and dark</p> <p>223 Grey/Rose Grey – light, medium, dark</p> <p>224 Black</p>	<p>Intermediate Male (12 months up to 24 months)</p> <p>230 White</p> <p>236 Light – beige and light fawn</p> <p>231 Fawn – medium and dark</p> <p>232 Brown – light, medium and dark</p> <p>233 Grey/Rose Grey – light, medium, dark</p> <p>234 Black</p>
<p>Adult Female (24 months and up to 48 months)</p> <p>240 White</p> <p>246 Light – beige and light fawn</p> <p>241 Fawn – medium and dark</p> <p>242 Brown – light, medium and dark</p> <p>243 Grey/Rose Grey – light, medium, dark</p> <p>244 Black</p>	<p>Adult Male (24 months and up to 48 months)</p> <p>250 White</p> <p>256 Light – beige and light fawn</p> <p>251 Fawn – medium and dark</p> <p>252 Brown – light, medium and dark</p> <p>253 Grey/Rose Grey – light, medium, dark</p> <p>254 Black</p>
<p>Senior Female (48 months and over)</p> <p>260 White</p> <p>266 Light – beige and light fawn</p> <p>261 Fawn – medium and dark</p> <p>262 Brown – light, medium and dark</p> <p>263 Grey/Rose Grey – light, medium, dark</p> <p>264 Black</p>	<p>Senior Male (48 months and over)</p> <p>270 White</p> <p>276 Light – beige and light fawn</p> <p>271 Fawn – medium and dark</p> <p>272 Brown – light, medium and dark</p> <p>273 Grey/Rose Grey – light, medium, dark</p> <p>274 Black</p>
<p>Multi Class</p> <p>280 Male and Female, any age.</p>	<p>Progeny Class</p> <p>290 Three progeny by one sire.</p> <p>291 Two progeny from one dam.</p>
<p>Wether/Gelding Class</p> <p>295 18 months and over</p>	



Halter Class Divisions and Numbering (Colour Championship)

Huacaya Classes (Colour Championship)

<p>Black Female</p> <p>104 Black Junior (6 months up to 12 months)</p> <p>124 Black Intermediate (12–24 months)</p> <p>144 Black Adult (24–48 months)</p> <p>164 Black Senior (48 months & over)</p>	<p>Black Male</p> <p>114 Black Junior</p> <p>134 Black Intermediate</p> <p>154 Black Adult</p> <p>174 Black Senior</p>
<p>Grey/Rose Grey Female light/medium/dark</p> <p>103 Grey Junior</p> <p>123 Grey Intermediate</p> <p>143 Grey Adult</p> <p>163 Grey Senior</p>	<p>Grey/Rose Grey Male light/medium/dark</p> <p>113 Grey Junior</p> <p>133 Grey Intermediate</p> <p>153 Grey Adult</p> <p>173 Grey Senior</p>
<p>Brown Female light/medium/dark</p> <p>102 Brown Junior</p> <p>122 Brown Intermediate</p> <p>142 Brown Adult</p> <p>162 Brown Senior</p>	<p>Brown Male light/medium/dark</p> <p>112 Brown Junior</p> <p>132 Brown Intermediate</p> <p>152 Brown Adult</p> <p>172 Brown Senior</p>
<p>Fawn Female medium/dark</p> <p>101 Fawn Junior</p> <p>121 Fawn Intermediate</p> <p>141 Fawn Adult</p> <p>161 Fawn Senior</p>	<p>Fawn Male medium/dark</p> <p>111 Fawn Junior</p> <p>131 Fawn Intermediate</p> <p>151 Fawn Adult</p> <p>171 Fawn Senior</p>
<p>Light Female</p> <p>106 Light Junior</p> <p>126 Light Intermediate</p> <p>146 Light Adult</p> <p>166 Light Senior</p>	<p>Light Male</p> <p>116 Light Junior</p> <p>136 Light Intermediate</p> <p>156 Light Adult</p> <p>176 Light Senior</p>
<p>White Female</p> <p>100 White Junior</p> <p>120 White Intermediate</p> <p>140 White Adult</p> <p>160 White Senior</p>	<p>White Male</p> <p>110 White Junior</p> <p>130 White Intermediate</p> <p>150 White Adult</p> <p>170 White Senior</p>
<p>Multi/Fancy Class</p> <p>180 Male and Female, any age</p>	<p>Progeny Class</p> <p>190 Three progeny by one sire</p> <p>191 Two progeny from one dam</p>
<p>Wether/Gelding Class</p> <p>195 18 months and over</p>	



Suri Classes (Colour Championship)

<p>Black Female</p> <p>204 Black Junior 224 Black Intermediate 244 Black Adult 264 Black Senior</p>	<p>Black Male</p> <p>214 Black Junior 234 Black Intermediate 254 Black Adult 274 Black Senior</p>
<p>Grey/Rose Grey Female light/medium/dark</p> <p>203 Grey Junior 223 Grey Intermediate 243 Grey Adult 263 Grey Senior</p>	<p>Grey/Rose Grey Male light/medium/dark</p> <p>213 Grey Junior 233 Grey Intermediate 253 Grey Adult 273 Grey Senior</p>
<p>Brown Female light/medium/dark</p> <p>202 Brown Junior 222 Brown Intermediate 242 Brown Adult 262 Brown Senior</p>	<p>Brown Male light/medium/dark</p> <p>212 Brown Junior 232 Brown Intermediate 252 Brown Adult 272 Brown Senior</p>
<p>Fawn Female medium/dark</p> <p>201 Fawn Junior 221 Fawn Intermediate 241 Fawn Adult 261 Fawn Senior</p>	<p>Fawn Male medium/dark</p> <p>211 Fawn Junior 231 Fawn Intermediate 251 Fawn Adult 271 Fawn Senior</p>
<p>Light Female</p> <p>206 Light Junior 226 Light Intermediate 246 Light Adult 266 Light Senior</p>	<p>Light Male</p> <p>216 Light Junior 236 Light Intermediate 256 Light Adult 276 Light Senior</p>
<p>White Female</p> <p>200 White Junior 220 White Intermediate 240 White Adult 260 White Senior</p>	<p>White Male</p> <p>210 White Junior 230 White Intermediate 250 White Adult 270 White Senior</p>
<p>Multi/Fancy Class</p> <p>280 Male and Female, any age.</p>	<p>Progeny Class</p> <p>290 Three progeny by one sire 291 Two progeny from one dam</p>
<p>Wether Class</p> <p>295 18 months and over</p>	



Fleece Class Divisions and Numbering (Age Championship)

Huacaya Classes (Age Championship)

Junior (6 months up to 12 months)	Adult (24 months and up to 48 months)
300 White	320 White
306 Light – beige and light fawn	326 Light – beige and light fawn
301 Fawn – medium/dark	321 Fawn – medium/dark
302 Brown – light/medium/dark	322 Brown – light/medium/dark
303 Grey/Rose Grey – light/medium/dark	323 Grey/Rose Grey – light/medium/dark
304 Black	324 Black
Intermediate (12 months up to 24 months)	Senior (48 months and over)
310 White	330 White
316 Light – beige and light fawn	336 Light – beige and light fawn
311 Fawn – medium/dark	331 Fawn – medium/dark
312 Brown – light/medium/dark	332 Brown – light/medium/dark
313 Grey/Rose Grey – light/medium/dark	333 Grey/Rose Grey – light/medium/dark
314 Black	334 Black
Progeny Class	
340 Three progeny by one sire	

Suri Classes (Age Championship)

Junior (6 months up to 12 months)	Intermediate (12 months up to 24 months)
400 White	410 White
406 Light- beige and light fawn	416 Light – beige and light fawn
401 Fawn – medium/dark	411 Fawn – medium/dark
402 Brown – light/medium/dark	412 Brown – light/medium/dark
403 Grey/Rose Grey – light/medium/dark	413 Grey/Rose grey – light/medium/dark
404 Black	414 Black
Adult (24 months and up to 48 months)	Senior Female (48 months and over)
420 White	430 White
426 Light – beige and light fawn	436 Light – beige and light fawn
421 Fawn – medium/dark	431 Fawn – medium/dark
422 Brown – light/medium/dark	432 Brown – light/medium/dark
423 Grey/Rose Grey – light/medium/dark	433 Grey/Rose Grey – light/medium/dark
424 Black	434 Black
Progeny Class	
440 Three progeny by one sire	



Fleece Class Divisions and Numbering (Colour Championship)

Huacaya Classes (Colour Championship)

Black 304 Black Junior 314 Black Intermediate 324 Black Adult 334 Black Senior	Grey/Rose Grey – light/medium/dark 303 Grey Junior 313 Grey Intermediate 323 Grey Adult 333 Grey Senior
Brown – light/medium/dark 302 Brown Junior 312 Brown Intermediate 322 Brown Adult 332 Brown Senior	Fawn – medium/dark 301 Fawn Junior 311 Fawn Intermediate 321 Fawn Adult 331 Fawn Senior
Light 306 Light Junior 316 Light Intermediate 326 Light Adult 336 Light Senior	White 300 White Junior 310 White Intermediate 320 White Adult 330 White Senior
Progeny Class 340 Three progeny by one sire	

Suri Classes (Colour Championship)

Black 404 Black Junior 414 Black Intermediate 424 Black Adult 434 Black Senior	Grey/Rose Grey – light/medium/dark 403 Grey Junior 413 Grey Intermediate 423 Grey Adult 433 Grey Senior
Brown – light/medium/dark 402 Brown Junior 412 Brown Intermediate 422 Brown Adult 432 Brown Senior	Fawn – medium/dark 401 Fawn Junior 411 Fawn Intermediate 421 Fawn Adult 431 Fawn Senior
Light 406 Light Junior 416 Light Intermediate 426 Light Adult 436 Light Senior	White 400 White Junior 410 White Intermediate 420 White Adult 430 White Senior
Progeny Class 440 Three progeny by one sire	



Award Rosettes and Sashes – Halter Classes

Rosettes and prize cards may be awarded to entrants up to 6th place, regardless of the number of exhibits in the class.

The judge has the absolute discretion as whether s/he should award a first place rosette, to start the placing where they deem appropriate or not to award a rosette at all.

As an example. 2nd might indicate minor faults or not of the desired standard and 3rd may have moderate or major faults.

The judge can, in exceptional circumstances, commence with a first place, but choose not to award rosettes through to 6th place, if there is a specific reason not to. For example, adult/senior male where there are faults in the lower placed alpacas.

Sashes are awarded to all Age or Colour Champions and Reserve Champions and Best of British.

Rosette colours are as determined by the conventions of the agricultural show or, if there are no conventions, as follows:

Red	1st	Blue	2nd	Yellow	3rd
Green	4th	Orange	5th	Purple	6th

Championships

Championships are awarded at the absolute discretion of the judge. A championship cannot be awarded to an alpaca placed lower than 1st, but judges do not HAVE to award a championship if the alpacas in first place are not deemed suitable to be awarded a championship. **Note, where a championship is not awarded, such decisions are not based on, nor restricted to the quality of the alpacas in the show being judged.**

Categories for Age Championships

Huacaya & Suri

Champion Junior Female
Reserve Champion Junior Female

Champion Junior Male
Reserve Champion Junior Male

Champion Intermediate Female
Reserve Champion Intermediate Female

Champion Intermediate Male
Reserve Champion Intermediate Male

Champion Adult Female
Reserve Champion Adult Female

Champion Adult Male
Reserve Champion Adult Male

Champion Senior Female
Reserve Champion Senior Female

Champion Senior Male
Reserve Champion Senior Male

Best of British (if awarded)

Supreme Champion



Categories for Colour Championships

Huacaya & Suri

Champion Grey female

Reserve Champion Grey female

Champion Black female

Reserve Champion Black female

Champion Brown female

Reserve Champion Brown female

Champion Fawn female

Reserve Champion Fawn female

Champion Light female

Reserve Champion Light female

Champion White female

Reserve Champion White female

Champion Grey male

Reserve Champion Grey male

Champion Black male

Reserve Champion Black male

Champion Brown male

Reserve Champion Brown male

Champion Fawn male

Reserve Champion Fawn male

Champion Light male

Reserve Champion Light male

Champion White male

Reserve Champion White male

Best of British (if awarded)

Supreme Champion

Awards for multi and gelding may be given at the discretion of the Show Organiser



Sires Progeny

Rosettes will be awarded to the **1st six placing's** in this Class. The award is for the Sire, therefore there are not separate rosettes for the three progeny.

Dam's Progeny

Rosettes will be awarded for the first three placed dams, but not to the progeny individually.

Junior Handler

Junior Handler classes may be held at the Show Organiser's discretion. The Show Organiser must be satisfied that all entrants are adequately insured and advise that competitors enter the ring at their own risk.

Age and Colour Championships

There is no minimum number of Alpacas required in either age, sex or colour in order to hold an Age or Colour Championship. However, the Judge has the discretion not to make an award, if there are no animals in that category of sufficient standard.

If there is less than 5 in a colour/age championship then male/female may be amalgamated to produce a Championship Class.

Award Rosettes and Sashes – Fleece Classes

Rosettes and prize cards may be awarded to entrants up to 6th place, regardless of the number of exhibits in the class.

A first placed rosette should not be awarded unless a fleece has achieved at least 60 points. **A champion award should not be awarded unless the fleece is awarded at least 70 points or more.**

Sashes are awarded to all Age or Colour Champion and Reserve Champions. Rosette colours are as determined by the conventions of the agricultural show or if there is no conventions as follows:

Red	1st	Blue	2nd	Yellow	3rd
Green	4th	Orange	5th	Purple	6th

*Huacaya & Suri- **Champion and reserve champion***

White
Light
Fawn
Brown
Grey
Black

Judge's Choice (most stylish fleece, ignoring weight)

Best of British

To be eligible for a Best of British award, an alpaca must have both parents born in the UK. Best of British will be awarded to the alpaca with the highest award (rosette) in each class *at the discretion of the Show Organiser*. It is recommended that this is an award per class rather than in the Show as a whole.

Supreme Champion



Composite Shows

Composite Shows under BAS rules may be held. The basis for these shows is as follows:

In composite shows, the shorn fleece is Judged according to The *BAS Alpaca Fleece Judging Manual* prepared by Cameron Holt (2011 edition) and the shorn Alpaca is Judged in the ring for conformation only. The scores are then combined to give the final placings.

1. Fleeces are scored according to The *BAS Alpaca Fleece Judging Manual* prepared by Cameron Holt (2011 edition) and placed in order 1, 2, 3, 4, etc.
2. The Alpacas are Judged in the ring for conformation only, and again placed 1, 2, 3, 4, etc.
3. These placings are added together by the Judge or Judges and the Alpaca with the lowest score wins, the rest being placed in numerical order on the same basis.
4. In the event of a tie, the Alpaca whose fleece scores the higher is the winner.
5. If scores are still level, the Alpaca with the higher fineness score wins.
6. The fleece shown must be from the most recent shearing, and the shorn Alpaca must carry no more than 50 mm/2 inches of fleece to be eligible for a composite class.



Appendix A

Other Duties of the Show Stewards

1. As a Show official a Steward must be familiar with all matters pertaining to the showing of Alpacas, including:
 - Showing etiquette
 - Judging criteria and procedure
 - Correct Exhibitor behaviour and attire
 - British Alpaca Society Rules, and relevant Show Rules to the Alpaca section, which may need to be enforced on the Show day
 - Liaison with Show committee and Exhibitors

2. Procedures relating to individual shows
It is also the function of the Chief Steward and Ring Stewards to be fully aware of the showing procedure used at any particular show.
For example:
 - How the Judge wants Alpacas paraded and lined up in relation to the audience.
 - Ensuring a good light source under which the Judge can examine the animals.

3. Management of Exhibitors
There are also management duties in relation to Exhibitors in the ring.
For example:
 - Ensuring there is appropriate spacing between Alpacas as they are paraded. A space of at least one full Alpaca length should be observed.
 - Ensuring Exhibitors make the most advantageous use of arena space and pay attention to the Judge and ring procedure at all times.

4. Presentations and awards
Before judging commences, the Chief Steward or Ring Steward should know the location of rosettes and awards, where to place them in the ring whilst judging is underway and how to assist the Judge in their correct presentation.

5. The Chief Steward or Entries Secretary must be responsible for providing the Ring Steward with a list of entries in **duplicate** for each class.

6. Co-ordination with announcer
Ensure Alpacas are called up and lined up in order, ready to enter the ring for next class. Supply results to announcer to announce during award and ribbon presentation of each class.

6. Accurately record results from all classes.



Appendix B

Inspection Steward's Checklist

1. The purpose of inspection is to ensure that all exhibits at a show have been properly identified, are eligible for entry, are entered in the correct classes, do not exhibit any disqualifying traits and, as far as is possible from a cursory examination, are healthy and free from any outward signs of sickness, disease, injury or parasites.

2. **Equipment**
 - Microchip reader – capable of reading BAS-approved microchips
 - Colour Chart
 - Inspection Steward's List - identifying exhibit's details
 - Clipboard and Pen
 - Suitable hand wash or gel
 - Ruler or rule to gauge fibre length

Preparation

It is recommended that a scribe be appointed to record the inspection details in conjunction with the inspection steward.

Access to pens

Prior to inspecting any alpacas, the exhibitor or exhibitor's representative must be present.

Inspection Criteria

Identification

First check that any BAS tag attached to the alpaca carries the correct tag number as identified on the entry/registration list.

If the correct ear tag is not present check that microchip is present, implanted and corresponds to the microchip number on the entry/registration list

Class

Check the following attributes to confirm correct entry in Show class:

- correct colour classification, using the BAS colour chart if necessary
- sex of alpaca
- class type (ie. Suri/Huacaya)
- age

Health

Examine each alpaca to assess any obvious signs of disease, mite infestation or injury and that it is in good health and clear of any faecal and urinary contamination, particularly under the tail.

Disqualified Alpaca

An Alpaca is disqualified from competition at a Show for the following faults or irregularities:

- a) Fleece length is either too long or too short for entered division.
- b) More or fewer than two toes (polydactylism).
- c) Fusion of toes (syndactylism).
- d) Fused ears, gopher ears.
- e) No tail, abnormally bent or kinked tail.
- f) Parasite infestation.
- g) Ectopic testicles.
- h) Incomplete, improperly formed or incorrectly proportioned genitalia.
- i) **Wry face**
- j) **Animals considered emaciated will be disqualified**



Fibre

Check fibre length in the blanket area is within the permitted limits:

Halter Show

Huacaya – Maximum 150 mm (6 inches) – Minimum 50 mm (2 inches)

Suri – Maximum 450 mm (18 inches) – Minimum 75 mm (3 inches)

(Juniors and Intermediates in first fleece are permitted to exceed maximum length)

Short Fleece show

Huacaya – Maximum 50 mm (2 inches) – Minimum 25 mm (1 inch)

Suri – Maximum 100 mm (4 inches) – Minimum 50 mm (2 inches)

Suri alpacas must have been shorn within the previous 18 months. This does not apply to suri alpacas in the junior and intermediate classes.

Composite show

Huacaya and Suri – Maximum 50 mm (2 inches)



Appendix C

Preparing an Alpaca for Showing

The Alpaca should be shown in a clean, well presented, natural and well trained manner and this requires planning on behalf of the Exhibitor. An animal in natural condition can be lightly trimmed on the bonnet and around the eyes only. The Judge will use his/her knowledge, experience and discretion in assessing the quality of all Alpacas in the show ring, but must Judge the animals as they are paraded before him/her on the day of a Show.

1. Fleece contamination
Most Alpacas that are at pasture will have fleece contamination from vegetable matter.
2. Methods of removing excessive vegetable matter
The most efficient way to remove excessive vegetable matter is by hand-picking. For most animals, blowing the fleece with a small animal blower will often be all that is necessary to remove dust and smaller debris. BE CAREFUL not to over blow, as this may open up the fleece and give it a fluffy appearance, destroying the staple and crimp.
3. Brushing is not recommended
Brushing is not recommended, especially in the blanket area, as excessive brushing will destroy the staple definition.
4. Washing
It may be necessary to wash an Alpaca's legs if muddy. Washing of the entire body is not recommended. Any urine stains should be washed out. Check that the Alpaca's rear end is clean and free from 'daggings'.
5. Keeping animals clean
After animals are prepared, keep them on clean pasture or in a clean pen area. Avoid wood chips for bedding. Broad straw or hay can be used as bedding.
6. Fleece length
Note that an animal with over-long fleece will be disqualified. If in a shorn class, Alpacas must be slick shorn, as opposed to saddle or lion cuts. A huacaya with fleece over 150 mm (6 inches) or under 50 mm (2 inches) will be disqualified, and a suri with fleece over 450 mm (18 inches) or under 75 mm (3 inches) will be disqualified except with first fleeces in junior and intermediate classes which are not subject to maximum fleece length.
7. Halter training and equipment
Proper halter training and a correctly fitting halter is very important to ensure that an Alpaca will walk freely around the ring and stand quietly for the Judge whilst being examined.
8. **Enhancement**
Animals that are judged to be overly prepared or trimmed or enhanced will be placed lower.



Appendix D

Preparing an Alpaca Fleece for Showing

Before shearing, remove as much dust, vegetable matter and debris as possible. Care should be taken not to damage the natural architecture, i.e. crimp, staple and lock formation. If a fleece is too badly contaminated, it may not be suitable for showing.

All fleeces being shown must be the property of the Exhibitor.

When submitting fleeces at the Show, Exhibitors must fill out both portions of the entry form and ensure they are placed in the clear plastic bag with the relevant fleece.

Skirting the fleece properly is essential. Once the blanket fibre is shorn from the Alpaca, shake the fleece to dislodge any second cuts and remove any over-long or very short fibres, which may have contaminated the main fleece area. Place on a preparation table and remove any areas that have obviously coarser fibres (guard hairs), have variation in colour, or are contaminated. Contamination can be from vegetable matter, second cuts (short pieces), staining or cotting. Turn the outside edges in approx. three inches to check that no coarse fibres have been missed.

Note: for showing purposes, a single fleece may have a limited lifespan. After being shown a number of times, even the best fleece may become a little 'tired' through over-handling and this should be taken into consideration when deciding at which shows to enter a fleece. The fleece should be as uniform in length as possible throughout.

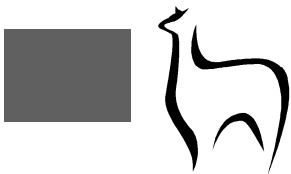
The fleece will be Judged on the following criteria:

- Fineness and handle
- Uniformity of micron
- Uniformity of staple length
- Uniformity of colour
- Character and style
 - Crimp (huacaya)
 - Lock formation (suri)
- Brightness (huacaya)
- Lustre (suri)
- Lack of guard hair
- Preparation, lack of impurities
- Clean fleece weight

Check the fleece for soundness and ensure that there are no "tender" sections. Remove by hand any remaining vegetable matter, stain or other impurities. The staple should have a clear cut formation with well-defined crimp.

During skirting it is important to remove impurities and display a well prepared fleece, rather than present a heavy fleece with a lot of contamination, as this will detract from the overall fleece and receive penalties during judging.

The Stewards will weigh the fleece before judging.



BAS Show Rules 2015 – amendments from 2014 (in red)

Page 5

4. It has been agreed by the Judges panel and the Shows Committee that £150 per day is paid to the judge in a BAS show and this will be raised by the show organiser.

Page 7

Once the Judge has made the final placing, the Ring Steward will record the number and pass this onto the judge for checking and signing before carrying out his oral reasons. This information will then be passed on to the announcer, who will announce the placing of the class after the Judge has given oral reasoning (if placings are announced before Championships are awarded (excluding Supreme awards) exhibitors should only be identified by their catalogue entry number). These results will then be passed on to the Show Secretary, who will record all results of the Show.

Page 8

The Exhibitor and Handler

1. Registration and Identification of Alpacas

NB. An Alpaca found at a Show with no BAS tag, and no detectable microchip, will be ineligible for entry until the owner has implanted a microchip and the registry notified by the show organiser and owner.

Page 8

3. Disqualified Alpaca

- l) Wry face
- j) Animals considered emaciated will be disqualified

Page 13

Class Division

- 3 When there are insufficient numbers to run individual colour and male and female Champions: merge Gender Champions and still award all colour Champions. For example: White, Light, Fawn, Brown, Black and grey Champions not white Male and Female Champion.

Reserve champions may be awarded at the show organiser's discretion.

Page 14

- 8 Fleece Length

For a short-fleeced show, the minimum length for huacaya alpaca fleece shall be 25mm (1 inch) and maximum of 50mm (2 inches). For suri alpacas, the minimum length shall be 50mm (2 inches) and the maximum is 100mm (4 inches). This does not apply to suri or huacayas in the junior and intermediate classes.

Page 14

- 9 Shorn Alpaca Classes

The staple length on the blanket must not exceed 50 mm (1 inch) for huacayas and 50 mm (2 inches) for suris.

Page 15

13. Colour Groups

Huacaya and Suri - **Lights – beige and light fawn (solid)**



Page 15

14. **Colour definitions**

Colour spot: An area of sharply contrasting colour measured at the skin.

A solid colour alpaca is:

- 1 An alpaca with no secondary colour spots
- 2 An alpaca containing no more than one colour spot in the blanket area that is not greater than 2 inches (50 mm) at its largest dimension
- 3 An alpaca that contains no more than two colour spots not greater than 2 inches (50 mm) anywhere on that alpaca, provided that no more than one spot of such dimension is located in the blanket area
- 4 **Definition of Contrasting colour:** to be considered contrasting the two colours need to be found at least two colours apart on the colour chart. For example a white alpaca with a dark fawn spot would be considered as contrasting.
 - a) A white alpaca with fawn on its head will not disqualify the alpaca from the white class but it will be considered as lack of colour uniformity.
 - b) An apparent white alpaca with a beige or fawn backline fading to a lighter class will be judged in the light class but will be considered as lack of colour uniformity.
 - c) A beige alpaca with medium fawn on the head and or backline will not disqualify the alpaca from the light class but will be considered as lack of colour uniformity.
 - d) If any one contrasting patch is more than six inches (150 mm) in its largest dimension anywhere on the alpaca then it shall be judged in the multi class

Page 16

14. Colour definitions - Grey

- 2 (b) **A light medium or dark rose grey** Alpaca is defined as displaying a uniform mix of predominantly brown and/or fawn, white and/or black fibres evenly distributed throughout the fleece with some white markings (patches) on both the face and throat. The uniformity of the overall grey appearance will be assessed in the same manner as a solid fleece.

Page 16

16. Class numbering

Third digit – colour

- | | |
|---|--------|
| 0 | White |
| 1 | Fawn |
| 2 | Brown |
| 3 | Grey |
| 4 | Black |
| 6 | Lights |

Page 17 – Show ring rules

9. **Handlers must not refer to their animal by name in the show ring.**

Page 18

6. **Fleece lengths for showing**

Huacaya fleece must be a minimum fleece length of 50 mm (2 inches). **Maximum** fleece length to be no more than 150 mm (6 inches). First fleeces in junior and intermediate classes are not subject to maximum fleece length.



Suri fleece must have a minimum fleece length of 75 mm (3 inches). **Maximum** fleece length be no longer than 450 mm (18 inches). First fleeces in junior and intermediate classes are not subject to maximum fleece length.

Page 31

Sires Progeny

Rosettes will be awarded to the **1st six placing's** in this Class. The award is for the Sire, therefore there are not separate rosettes for the three progeny.

Page 31 Award Rosettes and Sashes – Fleece Classes

A first placed rosette should not be awarded unless a fleece has achieved at least 60 points. **A champion award should not be awarded unless the fleece is awarded at least 70 points.**

*Huacaya & Suri - **Champion and reserve champion***

White
Light
Fawn
Brown
Grey
Black

Page 34 - Disqualifying faults

- **Animals considered emaciated will be disqualified**
- **Wry face**

Page 35 - Fibre

Check fibre length in the blanket area is within the permitted limits:

Halter Show

Huacaya – Maximum 150 mm (6 inches) – Minimum 50 mm (2 inches)

Suri – Maximum 450 mm (18 inches) – Minimum 75 mm (3 inches)

(Juniors and Intermediates in first fleece are permitted to exceed maximum length)

Short Fleece show

Huacaya – Maximum 50 mm (2 inches) – Minimum 25 mm (1 inch)

Suri – Maximum 100 mm (4 inches) – Minimum 50 mm (2 inches)

Suri alpacas must have been shorn within the previous 18 months. This does not apply to suri alpacas in the junior and intermediate classes.

Page 36

6. Fleece length

Note that an animal with over-long fleece will be disqualified. If in a shorn class, Alpacas must be slick shorn, as opposed to saddle or lion cuts. A huacaya with fleece over 150 mm (6 inches) or under 50 mm (2 inches) will be disqualified, and a suri with fleece over 450 mm (18 inches) or under 75 mm (3 inches) will be disqualified except with first fleeces in junior and intermediate classes which are not subject to maximum fleece length.

8. **Enhancement**

Animals that are adjudged to be overly prepared or trimmed or enhanced will be placed lower.